



Repacking Update

Repack Background

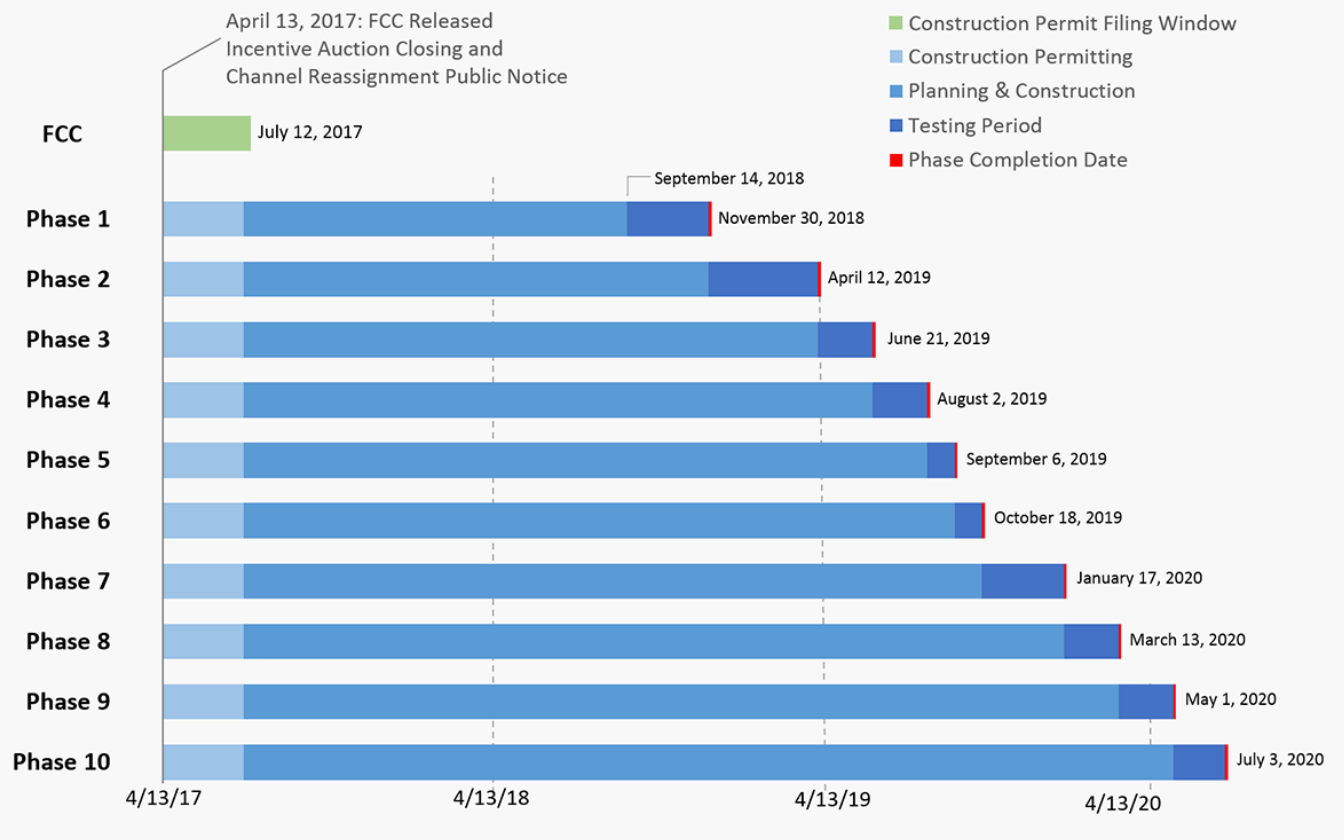
- April 13: FCC announces channel assignments for repacked stations
- 957 stations repacked
- Each station assigned to 1 of 10 phases
- July 12: CP applications and cost estimates

What's Next

- FCC reviewing cost estimates
- Initial allocations should be available soon
- How much are initial allocations?
- What if a station disagrees with its allocation?

What's Next

- FCC reviewing cost estimates
- Initial allocations should be available soon
- How much are initial allocations?
- What if a station disagrees with its allocation?



What's Next

- FCC reviewing cost estimates
- Initial allocations should be available soon
- How much are initial allocations?
- What if a station disagrees with its allocation?

Potential Problems

- FM Radio
- Hundreds of FM stations potentially impacted
- Many do not have off site auxiliary facilities
- How to minimize service losses?

Potential Problems

- Low Power and Translator Stations
- Not protected in auction
- If displaced, best case is non-reimbursed move

No, I didn't forget

- Two big concerns
- Time
- Money